

Welcome to the PSA!

All governors, parents and/or guardians of pupils at the school, teaching staff and all other staff are members of the Oundle Primary School Association.

Any parent or carer can be a committee member or helper and it's a great way to get involved with school life and meet other parents!

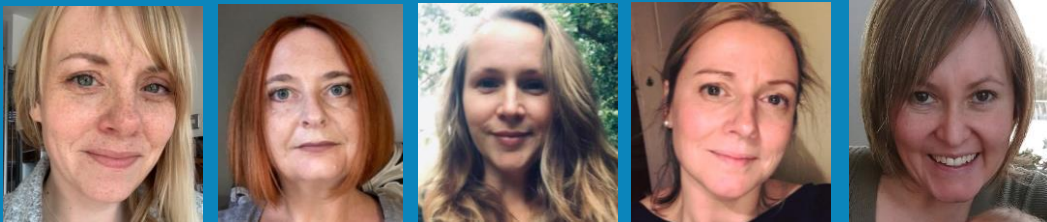
What do we do?

The main objective of the PSA is to advance the education of the pupils in the school. We strive to encourage good relations between school and home, organising and running social events for the school community.

In running these events we are also able to assist the school by raising money.

These funds provide resources and facilities not available from the ESFA and other funding bodies.

The Committee



The elected committee members from left to right are: Laura Oughton, Co-Chair and FS/Y6 parent; Tracy Jackson, Co-Chair and Y1/Y3 parent; Sam Palmer-Sheldon, Vice Chair and Y1/Y3 parent; Lindsey Wallis, Treasurer and Y3/Y6 parent; Daniela Farmer, Secretary and FS parent.

Additional members are Sarah Pumffrey, Y1/Y3 parent; Kim Beesley, FS/Y2 parent; Tina Dodd, Y2 parent; Katie McNally, FS/Y5 parent and Charlie Dowman, FS parent.

Meetings

We meet once a month to catch up on fundraising progress and to discuss and plan upcoming events. Meetings have been conducted via zoom during the COVID pandemic due to restrictions, but we hope to return to meetings at the pub this academic year! Keep an eye out for dates, times and venue coming soon ...

PSA Facebook page

Now that your child has started school, you can request to join our Facebook group for updates on events, fundraising and more. We verify all member requests with the school office to ensure we are only permitting parents and carers of current OPS pupils, onto the page. **When asking to join, please answer the important join questions and then bear with us while we verify your details.**

www.facebook.com/groups/oundleprimaryschoolassociation